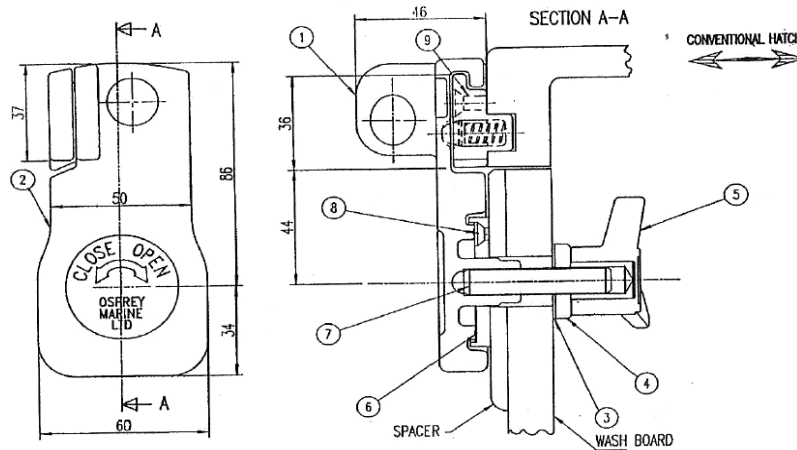


Application, Fitting and Maintenance Instructions

'Hatch-Latch' HL1000 and HL1010



ITEM	PART NO.	DESCRIPTION	MATERIAL	QTY	MATERIAL
			HL 1000		HL 1010
9	NO. 10x25	SCREW	316 ST. ST.	2	316 ST. ST.
8	NO. 8x20	SCREW	316 ST. ST.	3	316 ST. ST.
7	M10	STUD	316 ST. ST.	1	316 ST. ST.
6	HL003	BEARING PLATE	316 ST. ST.	1	316 ST. ST.
5	HL009	THREE ARM KNOB	GRP	1	GRP
4	HL005	LOCK NUT	316 ST. ST.	1	316 ST. ST.
3	HL006	NYLON WASHER	NYLON 6	1	NYLON 6
2	HL002	LATCH	316 ST. ST.	1	P/BRONZE
1	HL008	KEEPER PLATE ASSY	316 ST. ST.	1	P/BRONZE

HL1000 STAINLESS STEEL
 HL1010 PHOSPHOR BRONZE
 HATCHLATCH

NOTE - complies with ORC rule 6.13 which requires that companionway access must be able to be secured at sea, and operable from above and below decks

IMPORTANT - for the fitting of Hatch-Latch it is essential that the face of the wash board is flush with the face of the sliding hatch when the hatch is closed. A spacer may, therefore, be needed (see drawing above)

WARNING - only authorised locksmiths are able to open these padlocks using special equipment. Therefore, ensure keys are safely stored in separate locations. Spare keys can be cut from a key supplied via authorised locksmiths only. If you lose your keys, do not attempt to break open the lock as this will be unsuccessful

MAINTENANCE - use WD40 sparingly several times per season to coat the surfaces and the two shackle holes of the lock. Also, apply to the sprung loaded ball end in the keeper plate of Hatch-Latch (item 1). Discolouration of the padlock can occur over time. This is easily removed with warm fresh water, liquid soap and a non abrasive plastic scourer. Then reapply WD40. This service programme will greatly extend the life of the unit

FITTING INSTRUCTIONS - SEE OVER

Originators, manufacturers and distributors of 'Hatch-Latch' sailboat security system

FITTING INSTRUCTIONS

For forward facing companionway access, consider mounting Hatch-Latch to the port side. This will help to stop the crew from accidentally hitting the keeper plate assembly (*item 1*) screwed to the sliding hatch

1. After very careful consideration of where to position Hatch-Latch, fit spacer (*not supplied*) if required (*see drawing overleaf*). Choose a material to enhance the appearance of your wash board - i.e. wood, plastic, metal etc.
2. Cut stud (*item 7*) to suit your boat. LENGTH of stud = T + 30mm (T=total thickness of wash board, including spacer if fitted)
3. With the sliding hatch closed, and the wash board/s in position, carefully stick the self adhesive hole template to the face of the wash board (*or vertical spacer if fitted*) and to the face of the sliding hatch. Using a bradawl, ACCURATELY mark 7x hole centres. Drill 1x hole 19mm dia. (*drill supplied - when the point of the drill breaks through to the reverse side of the wash board, finish drilling from this reverse side. This will avoid the wood splintering around the hole area*) through the wash board (and spacer if fitted). Then drill 1x 14mm dia. x 10mm deep (*drill supplied*) into the face of the sliding hatch. Finally, core drill 5x holes to suit screws (*items 8 and 9*)
4. Use 3x screws (*item 8*) to fix the bearing plate (*item 6*) to the wash board. Use a thin film of sealant between the rear face of the bearing plate (*item 6*) and the wash board face
5. Use 2x screws (*item 9*) to fix the keeper plate assembly (*item 1*) to the sliding hatch. Use a thin film of sealant between the surfaces in contact. If possible, it is preferred that 2x countersunk M5 machine screws are used in place of the supplied screws (*item 9*), with an internal metal plate or 2x large dia. washers with M5 Nyloc nuts (*not supplied*)
6. Use two pack epoxy glue at the bottom of the M10 hole in the latch (*item 2*) prior to screwing in the M10 stud (*item 7 - see also paragraph 2 above*) to full depth
7. Using 2x disposable M10 nuts (*supplied*) as locking nuts, tightly lock the stud (*item 7*) into the latch (*item 2*). Remove locking nuts and discard
8. After the epoxy glue has set, slide the latch (*item 2*) and stud (*item 7*) assembly through the bearing plate (*item 6*) and wash board. Below decks, fit the nylon washer (*item 3*) and screw on the lock nut (*item 4*) to the stud (*item 7*). Finger tighten the the lock nut (*item 4*) so that the latch (*item 2*) rotates freely, but without any slackness
9. Apply a mole wrench to the outside dia. of the lock nut (*item 4 - use a cloth protector to avoid damage to the lock nut*) and screw the 3-arm knob (*item 5*) until it is face to face with the lock nut (*item 4*)
10. Using the mole wrench to prevent rotation, firmly tap the three arm knob with a wooden or rubber mallet to lock it tightly against the lock nut (*item 4*)

Your Hatch-Latch is now ready to secure your boat for many seasons - both in harbour and at sea

Thank you for purchasing this product from us. We hope you are delighted. In the event of any queries or problems, please contact us

Osprey/instructions/HL1000 and HL1010
Revised 08/01/2007

© All design rights are exclusively owned by Osprey Marine Ltd.